

Unit ID **Pellet press**
Component **Gear/transmission**
Lab number **1700889**

 +49 8034-9047-210

page 1 of 1

OELCHECK GmbH · Kerschelweg 28 · 83098 Brannenburg

Example report
Analysis scope: Analysis-Kit 2

Machine type: **Gear/transmission**
Manufacturer: **Kahl**
Oil brand name: **Mobil Glygoyle 460**
Oil quantity in system: **320 l**

Diagnosis for the current laboratory values



The wear values are in the normal range. The content of magnetic wear particles is lower than the detection limit of the PQ index. If no oil change has happened yet, it is possible to continue using the oil under similar operating conditions and under continuation of the usual maintenance schedule. Please send us the next sample after a further 2,000 hours for trend analysis. No oil change is required during this period if the operating conditions remain similar.

Dipl.-Ing. (FH) Stefan Mitterer (CLS)

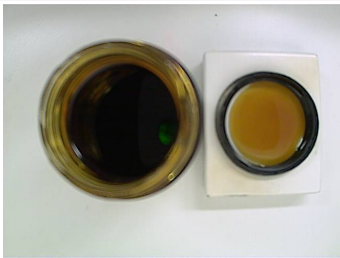
Sample Rating



normal

ANALYSIS RESULTS			Current sample	Previous samples	
LAB NUMBER			1700889	1700891	
SAMPLE RATING					
Date tested			09.01.2025	08.02.2024	
Date of sample taken			17.12.2024	17.01.2024	
Date of last oil change			25.11.2024	15.09.2018	
Top-up since change	l		0	100	
Operating time since change	h		500	6800	
Total operating time	h		54600	50100	
Oil changed			no	no	
WEAR					
Iron	Fe	mg/kg	6	46	
Chrome	Cr	mg/kg	0	0	
Tin	Sn	mg/kg	2	9	
Aluminum	Al	mg/kg	0	1	
Nickel	Ni	mg/kg	0	0	
Copper	Cu	mg/kg	5	16	
Lead	Pb	mg/kg	0	0	
PQ index	-		< 25	78	
CONTAMINATION					
Silicon	Si	mg/kg	3	11	
Potassium	K	mg/kg	0	0	
Sodium	Na	mg/kg	0	0	
Water	%		0.10	0.10	
OIL CONDITION					
Viscosity at 40°C	mm²/s		460.52	438.54	
Viscosity at 100°C	mm²/s		75.24	73.51	
Viscosity index	-		245	248	
Oxidation	A/cm		-	-	
IR index	-		98.78	97.27	
ADDITIVES					
Calcium	Ca	mg/kg	0	1	
Magnesium	Mg	mg/kg	0	1	
Boron	B	mg/kg	0	1	
Zinc	Zn	mg/kg	0	14	
Phosphorus	P	mg/kg	1330	1196	
Barium	Ba	mg/kg	6	9	
Molybdenum	Mo	mg/kg	0	0	
ADDITIONAL TESTS					
AN / NN	mgKOH/g		0.64	1.13	

Bottle and cap



Infrared Spectrum

